

Deep Winter

Deep Winter is rich and dramatic, combining cool tones with depth and intensity for a bold, sophisticated look.

- Key Features**
- Cool-neutral undertones
 - High to very high contrast
 - Deep and rich

YOUR BEST COLORS



Signature Styling Rule

Lean into depth and drama with strong, cool contrast. Avoid light or overly soft colors.

Best White Crisp, pure white

Best "Black" True black, deep charcoal

Best Neutrals Black, charcoal, deep navy, cool espresso

STYLING NOTES

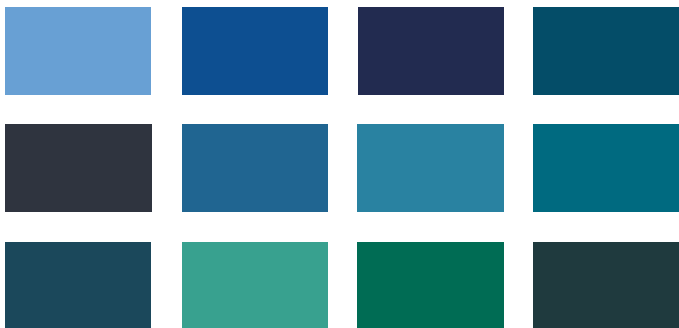
- Pair deep, rich tones together
- Avoid light or pastel colors
- Use contrast, but keep it cool
- Choose structured, substantial fabrics

Colors That Enhance Your Radiance

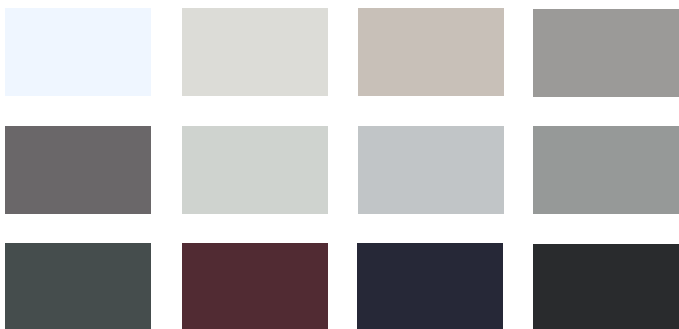
YOUR gloPALETTE



DEEP WINTER



YOUR BEST NEUTRALS



GUIDE TO GLO-ING LOOKS

Jewelry / Metallics

Pewter, gunmetal, silver, nickel, gold, white gold, brass, and copper.

Hair

Choose cool or neutral, deep tones. Black, espresso, and deep brown enhance your intensity. Avoid warmth or lightness.

Makeup

You shine in deep, sculpted, and refined makeup. You can enhance multiple features while maintaining depth. Avoid light or overly warm tones.

Best Lip Color

Wine, berry, deep plum

Best Eyeshadow

Charcoal, plum, deep cool brown

Best Eyeliner

Black, charcoal, deep plum

Application Tip

Build depth gradually and blend for a polished, dimensional effect.