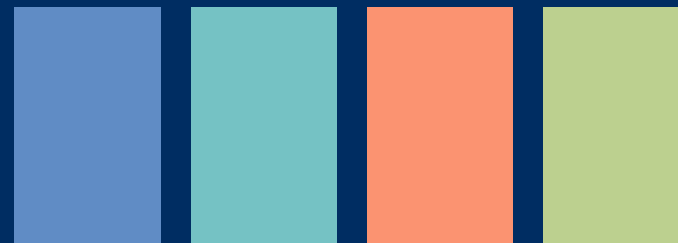


Light Spring

Light Spring is soft, fresh, and delicate, with warm tones that feel airy and luminous. Avoid anything heavy or dark.

- Key Features**
- Warm-neutral undertones
 - Medium to low contrast
 - Light and delicate

YOUR BEST COLORS



Signature Styling Rule

Keep everything light, warm, and airy. Avoid depth.

Best White Soft, warm white

Best "Black" Light warm gray, soft camel

Best Neutrals Light beige, soft camel, warm taupe

STYLING NOTES

- Choose light, tonal outfits
- Keep contrast minimal
- Avoid dark or heavy colors
- Opt for soft, flowing fabrics

Colors That Enhance Your Radiance

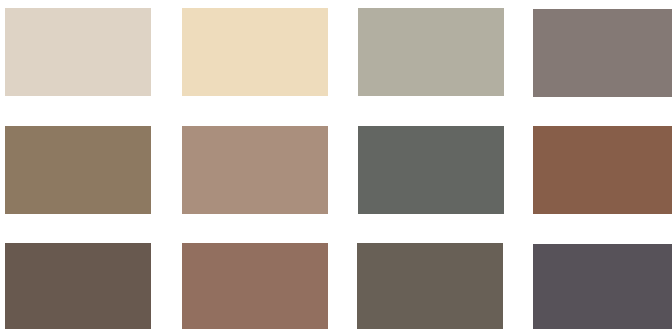
YOUR gloPALETTE



LIGHT SPRING



YOUR BEST NEUTRALS



GUIDE TO GLO-ING LOOKS

Jewelry / Metallics

Champagne gold, light gold, white gold and delicate rose gold with a soft sheen.

Hair

Choose light, warm or neutral tones. Golden blonde and soft strawberry tones enhance your softness.

Makeup

You shine in light, fresh, and delicate makeup. Focus on enhancing one feature subtly.

Best Lip Color

Soft peach,
light coral

Best Eyeshadow

Champagne,
soft gold

Best Eyeliner

Light brown,
soft taupe

Application Tip

Use a light hand. Less is more.