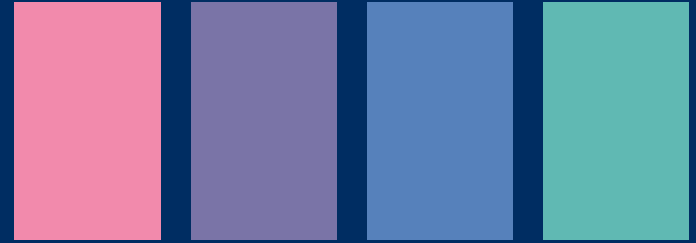


# Light Summer

Light Summer is airy and delicate, featuring cool tones that are light, soft, and luminous. The overall effect is fresh, subtle, and low contrast.

- Key Features**
- Cool-neutral undertones
  - Medium to low contrast
  - Delicate and light

## YOUR BEST COLORS



## Signature Styling Rule

Keep everything light, cool, and delicate. Avoid depth and contrast.

**Best White** Soft, off-white

**Best "Black"** Soft gray, light navy

**Best Neutrals** Light gray, cool beige, soft navy, pale taupe

## STYLING NOTES

- Choose light, tonal combinations
- Avoid dark or heavy colors
- Keep contrast minimal
- Opt for soft, airy fabrics

Colors That Enhance Your Radiance

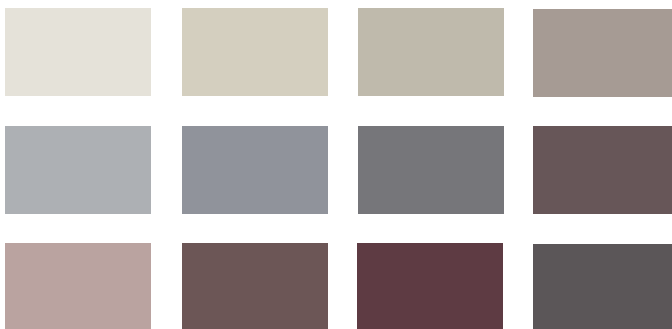
## YOUR gloPALETTE



## LIGHT SUMMER



## YOUR BEST NEUTRALS



## GUIDE TO GLO-ING LOOKS

### Jewelry / Metallics

White, yellow, or rose gold, silver, copper, brass, platinum, nickel, and pearl.

### Hair

Choose light, cool, or neutral tones. Ash blonde and cool beige-blonde enhance your lightness. Avoid depth or warmth.

### Makeup

You shine in light, fresh, and softly defined makeup. Enhance one feature subtly. Avoid bold or heavy looks.

#### Best Lip Color

Soft pink, blush, light rose

#### Best Eyeshadow

Light taupe, soft gray, cool lavender

#### Best Eyeliner

Soft gray, cool taupe

#### Application Tip

Use a light hand and build gently for a natural, luminous effect.