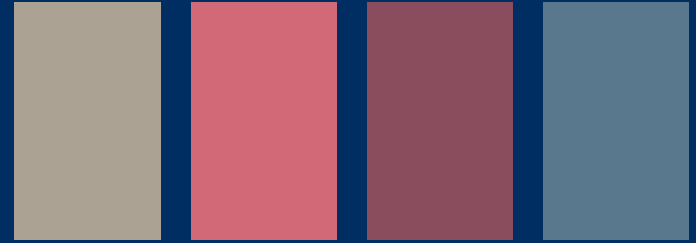


Soft Summer

Soft Summer is muted and understated, featuring cool tones softened with gray for a gentle, blended look. Colors feel calm, refined, and low contrast.

- Key Features**
- Cool-neutral undertones
 - High to medium contrast
 - Serene and muted

YOUR BEST COLORS



Signature Styling Rule

Keep everything soft, cool, and blended. Your beauty lives in subtlety. Avoid contrast.

Best White Soft, off-white

Best "Black" Soft charcoal, muted navy

Best Neutrals Taupe, cool gray, dusty navy, rose brown

STYLING NOTES

- Choose tonal outfits with blended colors
- Keep colors muted and cohesive
- Avoid stark contrast or bold combinations
- Opt for soft textures and fluid fabrics

Colors That Enhance Your Radiance

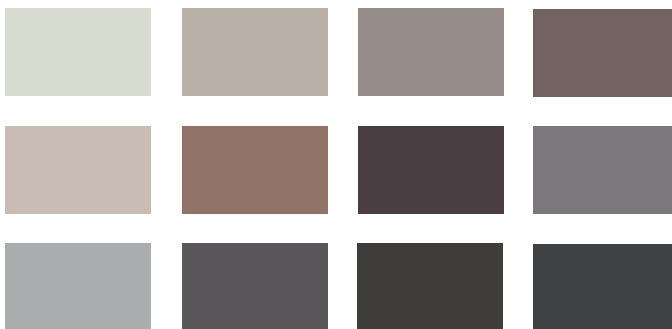
YOUR gloPALETTE



SOFT SUMMER



YOUR BEST NEUTRALS



GUIDE TO GLO-ING LOOKS

Jewelry / Metallics

White, yellow, or rose gold, silver, copper, brass, platinum, and nickel in brushed or hammered finishes

Hair

Choose cool or neutral, muted tones. Ash brown, mushroom tones, and soft brunette shades enhance your softness. Avoid warmth or high contrast.

Makeup

You shine in cool or neutral, soft, and diffused makeup. Enhance one feature at a time. Avoid bold or high contrast looks.

Best Lip Color

Mauve, dusty rose, soft berry

Best Eyeshadow

Taupe, gray, soft plum

Best Eyeliner

Soft gray, muted charcoal, cool brown

Application Tip

Blend thoroughly and keep everything softly diffused.