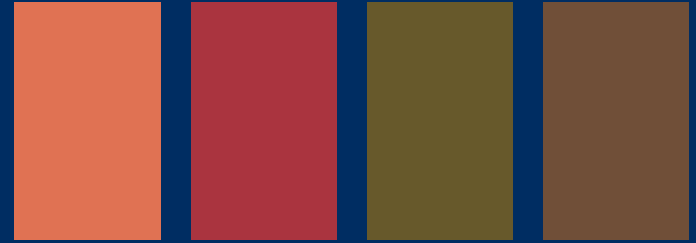


# True Autumn

True Autumn is warm, grounded, and richly saturated. This palette reflects the depth and warmth of fall foliage with golden undertones and earthy vibrance.

- Key Features**
- Warm undertones
  - Very high to high contrast
  - Rich and earthy

## YOUR BEST COLORS



## Signature Styling Rule

Stay warm, rich, and harmonious. Avoid cool or icy tones.

**Best White** Creamy ivory

**Best "Black"** Deep chocolate brown, warm espresso

**Best Neutrals** Camel, warm beige, olive, chocolate brown

## STYLING NOTES

- Lean into rich, warm color combinations
- Mix earthy tones for a grounded, cohesive look
- Avoid cool tones or stark contrast
- Choose textured fabrics and natural materials

Colors That Enhance Your Radiance

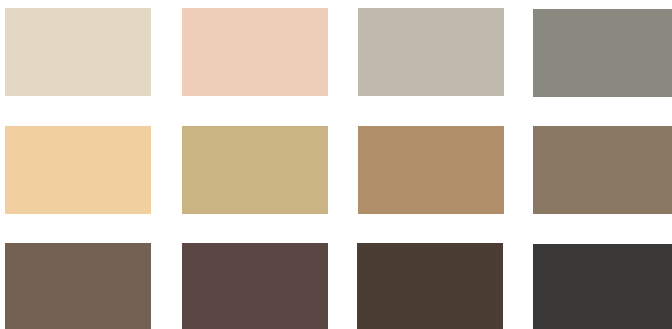
## YOUR gloPALETTE



## TRUE AUTUMN



## YOUR BEST NEUTRALS



## GUIDE TO GLO-ING LOOKS

### Jewelry / Metallics

Yellow gold, antique gold, copper, bronze with brushed or hammered finishes

### Hair

Choose warm tones that are rich, dimensional, and blended. Golden brown, auburn, and copper tones enhance your warmth, while cool or ashy shades can feel dull.

### Makeup

You shine in warm, rich, and softly defined looks. Enhance one or two features while keeping tones cohesive and earthy. Avoid cool or overly bright shades.

#### Best Lip Color

Terracotta, brick, warm rose

#### Best Eyeshadow

Bronze, copper, olive, warm brown

#### Best Eyeliner

Chocolate brown, bronze, deep olive

#### Application Tip

Layer warm tones and blend well to create a seamless, radiant finish.