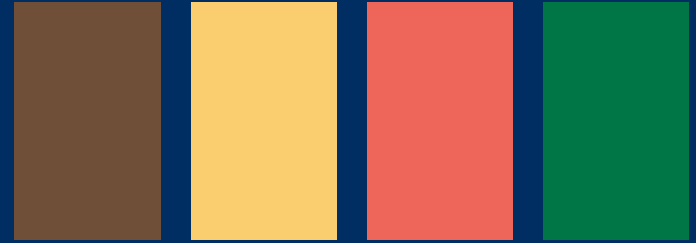


True Spring

True Spring is fresh and radiant, featuring warm, clear tones that feel light, bright, and full of energy.

- Key Features**
- Warm undertones
 - Medium to low contrast
 - Warm and luminous

YOUR BEST COLORS



Signature Styling Rule

Keep everything fresh, warm, and light. Avoid heaviness.

Best White Warm ivory

Best "Black" Warm navy, deep camel

Best Neutrals Light camel, warm beige, golden tan

STYLING NOTES

- Choose light, bright combinations
- Keep contrast moderate and warm
- Avoid dark or heavy colors
- Opt for light, crisp fabrics

Colors That Enhance Your Radiance

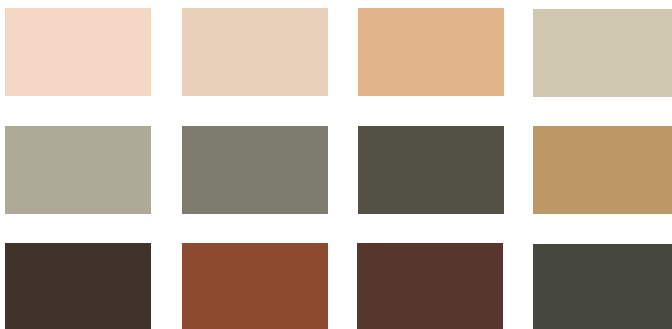
YOUR gloPALETTE



TRUE SPRING



YOUR BEST NEUTRALS



GUIDE TO GLO-ING LOOKS

Jewelry / Metallics

Radiant yellow gold, light gold, copper, brass and warm rose gold in polished finishes

Hair

Choose light, warm tones. Golden blonde, strawberry blonde, and warm light brown enhance your brightness.

Makeup

You shine in fresh, radiant, and natural makeup. Focus on one feature and keep everything light and glowing. Avoid heavy or matte looks.

Best Lip Color

Coral, peach, warm pink

Best Eyeshadow

Gold, warm taupe, soft copper

Best Eyeliner

Warm brown, soft bronze

Application Tip

Keep skin luminous and avoid over-layering product.