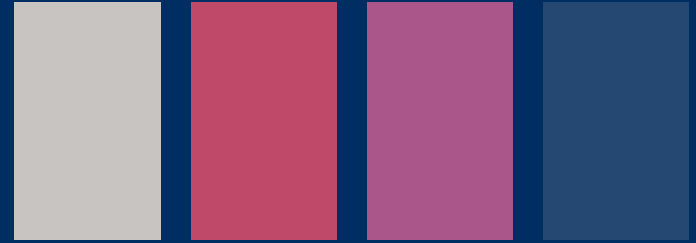


True Summer

True Summer is soft and refined, featuring cool tones with a balanced, elegant quality. Colors are neither too light nor too dark, creating a harmonious and polished appearance.

- Key Features**
- Cool undertones
 - Medium to low contrast
 - Cool and serene

YOUR BEST COLORS



Signature Styling Rule

Stay cool, soft, and perfectly balanced. Avoid warmth and harsh contrast.

Best White Soft, cool white

Best "Black" Soft charcoal, cool navy

Best Neutrals Cool gray, cool navy, rose taupe, soft blue gray

STYLING NOTES

- Keep contrast moderate and soft
- Choose harmonious, blended color combinations
- Avoid overly dark or bright colors
- Opt for refined, elegant fabrics

Colors That Enhance Your Radiance

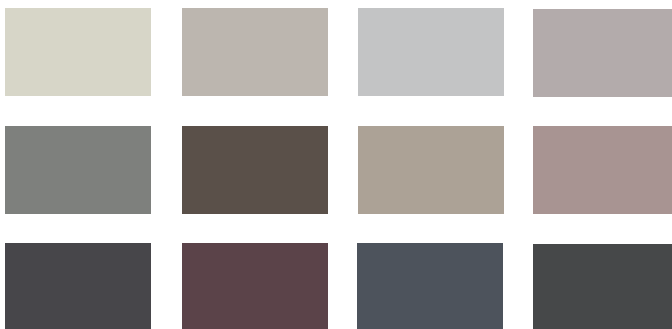
YOUR gloPALETTE



TRUE SUMMER



YOUR BEST NEUTRALS



GUIDE TO GLO-ING LOOKS

Jewelry / Metallics

Silver, titanium, platinum, nickel, pewter, white gold

Hair

Choose cool tones. Ash brown, cool brunette, and soft blonde shades enhance your balance. Avoid warmth or excessive contrast.

Makeup

You shine in soft, cool, and polished makeup. Enhance one or two features while maintaining balance. Avoid overly bold or warm tones.

Best Lip Color

Rose, cool pink, soft berry

Best Eyeshadow

Taupe, cool brown, soft lavender

Best Eyeliner

Soft gray, charcoal, cool brown

Application Tip

Blend gently and keep tones soft for an elegant, seamless finish.